

**Fanatec solderless conversion instructions.**

**Caution:**

**This may void your warranty of the Fanatec steering wheels.**

**This is a reversible modification, however any holes drilled in the steering wheel plastics can't be reversed.**

Remove the six screws highlighted screws.

The Hex bolts are 2.5mm and the Hex screws are 2mm



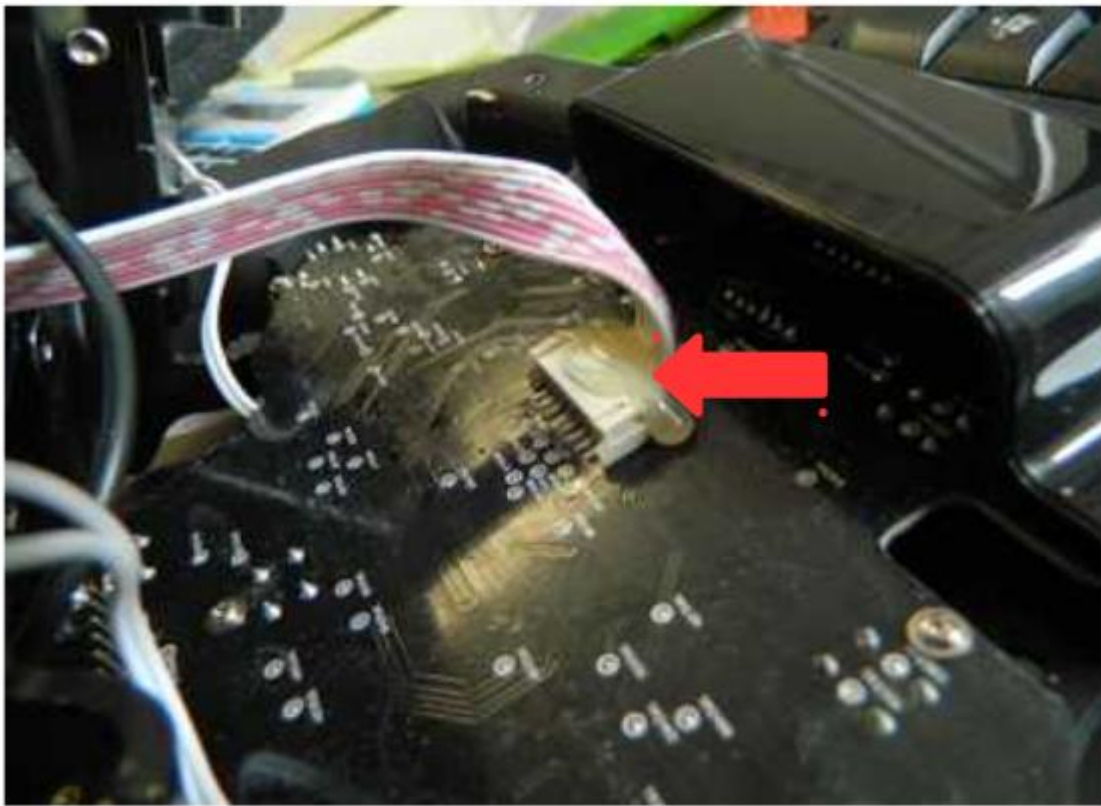
The rear cover should be able to be removed and the 4 spacers come out.



Remove the hot glue from the Fanatec Quick release connector.

This normally is easily pulled off but can require a small amount to heat to soften the glue.

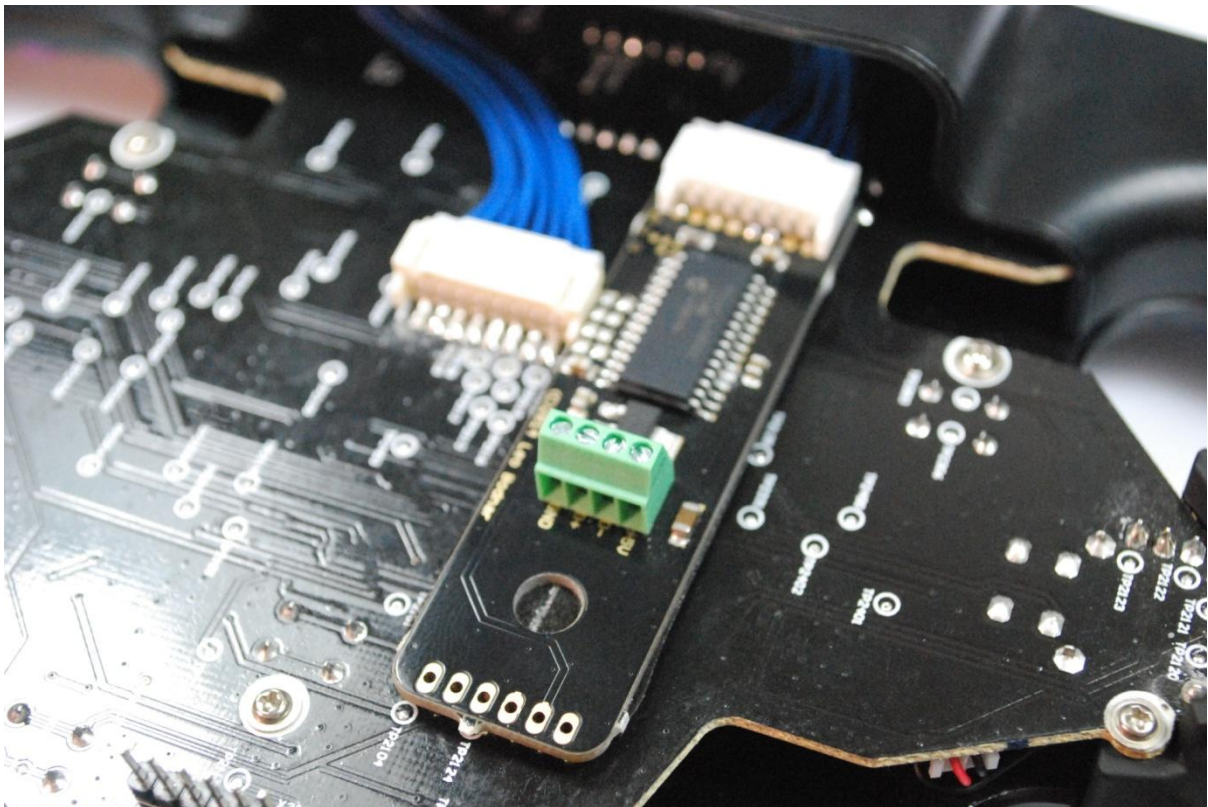
This should allow the Fanatec cable to slide towards the top of the steering wheel and be disconnected.



Connect one end of the blue 8 way cable to the Leo Bodnar conversion board and the other end to the Fanatec steering wheel.

Hot glue can be used to retain the cable, but it is not essential.

Attach the conversion board to a suitable location on the Fanatec PCB. The supplied double sided foam tape can be used to stick the board in place.



If you are fitting the supplied cable gland, drill a 12mm ( ½ inch ) hole in the plastic cover.



Attach the cable gland to the rear USB panel and feed the USB cable through the cable gland.

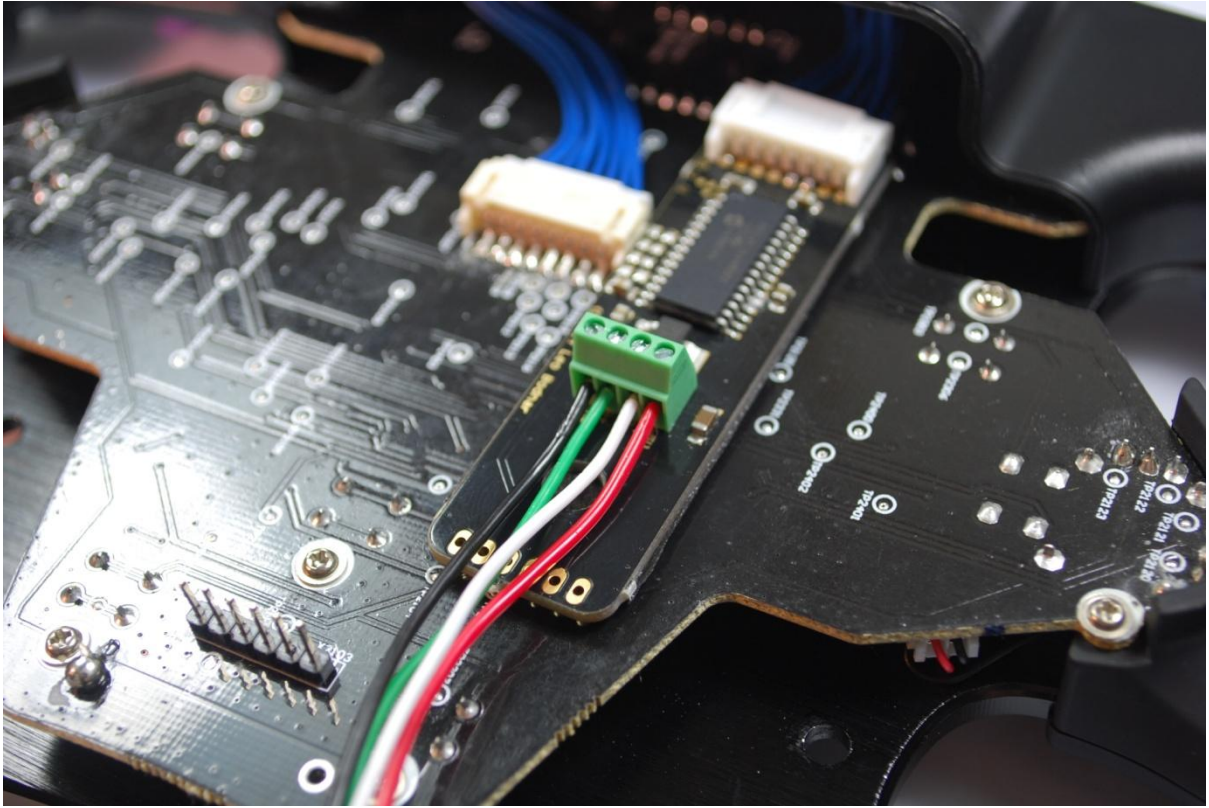
Connect the USB cable.

Any USB cable can be used. We also have coiled USB leads available on our website.

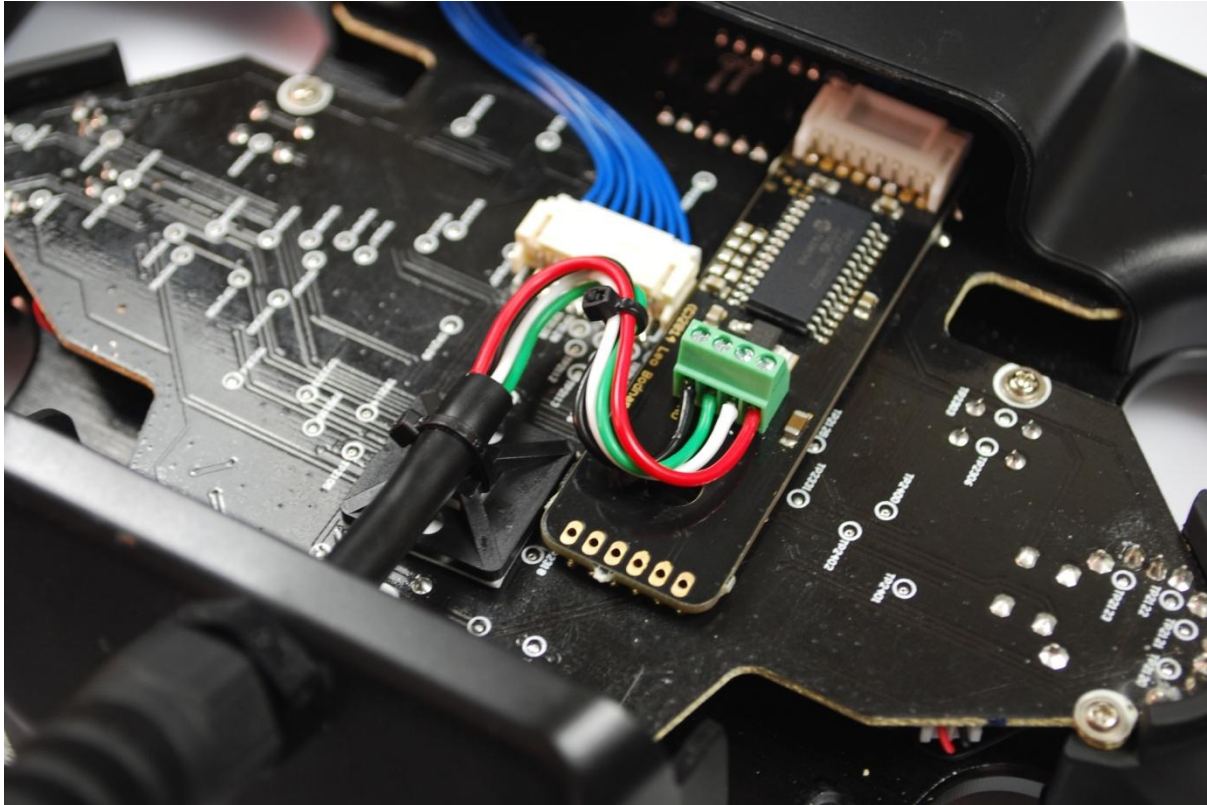
Strip off around 25mm/1" of the wire insulation to expose the coloured wires. Strip around 3-4mm of insulation of each of the coloured wires. Connect the wires to the green screw terminals.

+5V	Red	
D-	White	
D+	Green	
GND	Black	





Use the supplied cable ties and cable tie saddles to secure the USB cable.



### Re-assembly

Re-assembly of the wheel is a reversal of the procedure shown in the first pages.

#### Tips:

- ✓ Now is the best time to remove the Fanatec quick release and fit your own!
- ✓ Remember to re-insert the shifter electrical plugs back into the Fanatec PCB
- ✓ Remember re-connect earth wire (if it was disconnected)
- ✓ Fit the plastic part of the casing to the front panel first before re-fitting the shifters.
- ✓ Refitting spacers is very fiddly! Careful not to drop/loose them.

## **Software**

Software for the converted wheel can be found on

[www.fanaleds.com](http://www.fanaleds.com)



This supports over 30 software titles.

Remember, this converts the wheel into a standalone USB device. Some games have a limit to how many USB game controllers can be connected at once so please check this if your wheel is not working in game.

**Leo Bodnar (Electronics) LTD**

**Units 7 - 8 New Rookery Farm**

**Silverstone**

**Northamptonshire**

**NN12 8UP**

**United Kingdom**

**E-mail: [support@leobodnar.com](mailto:support@leobodnar.com)**

**Tel: +44(0)1327 850666**