

## Leo Bodnar Fanatec Formula Wheel Rim PCB Conversion Instructions

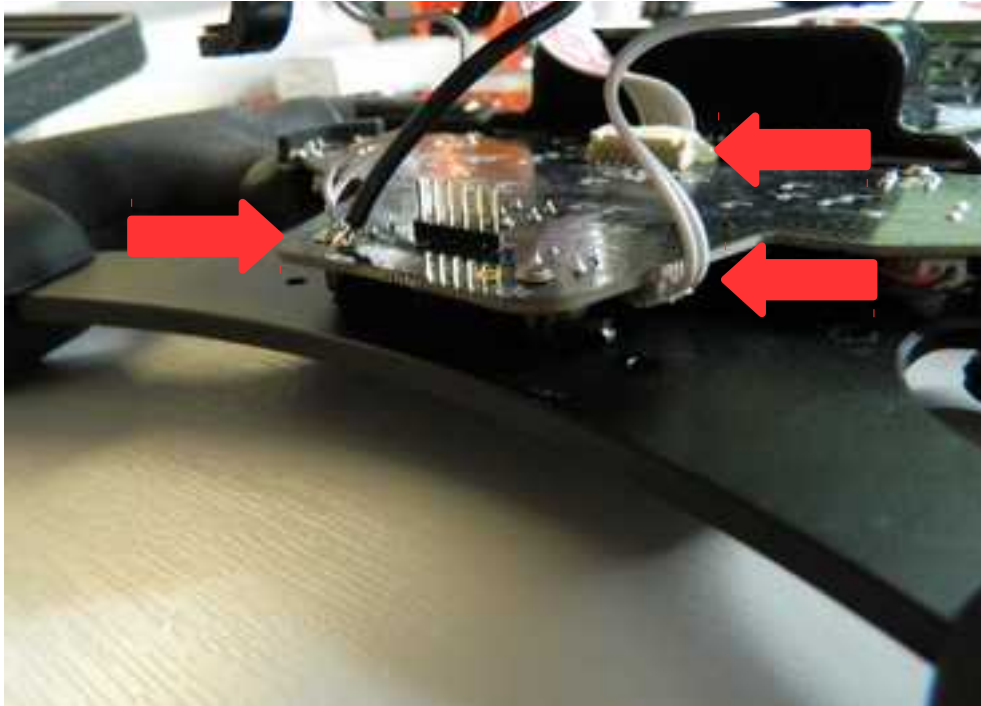
Good soldering and hand skills are required to fit the PCB to the Fanatec wheel rim. It is assumed that you possess these skills to perform this task and we accept no responsibility for any damage that you may cause to your wheel.

**Please read the instructions provided in this document carefully in FULL before starting the job.**

Remove the six screws highlighted below.



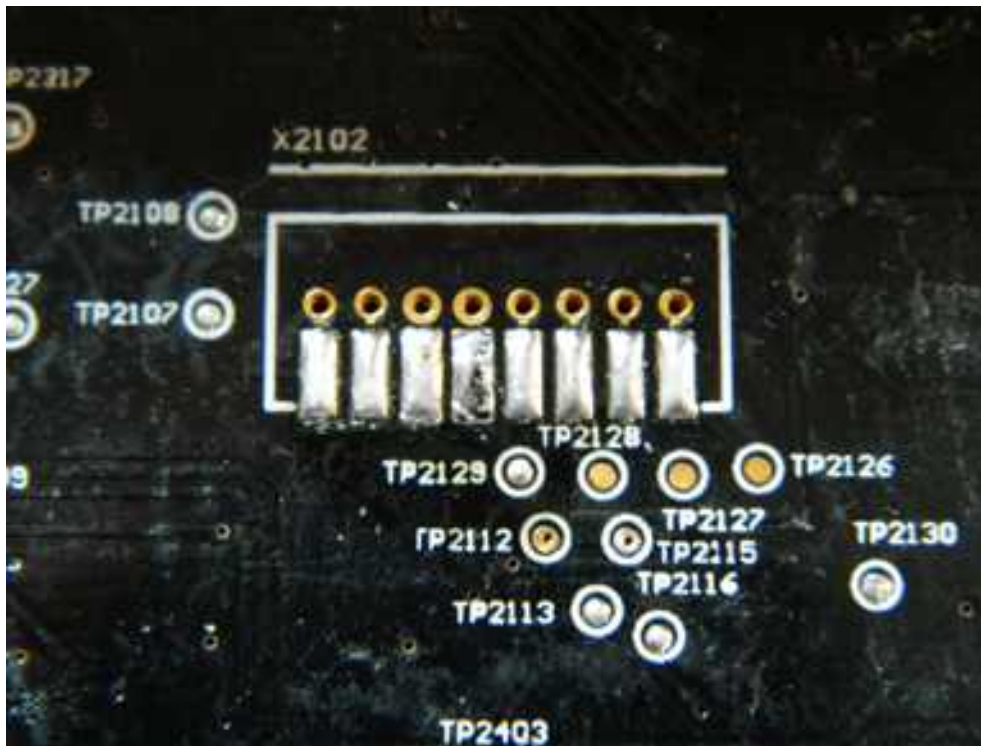
Unclip the shifter and quick release electrical plugs from the connectors on the Fanatec PCB.



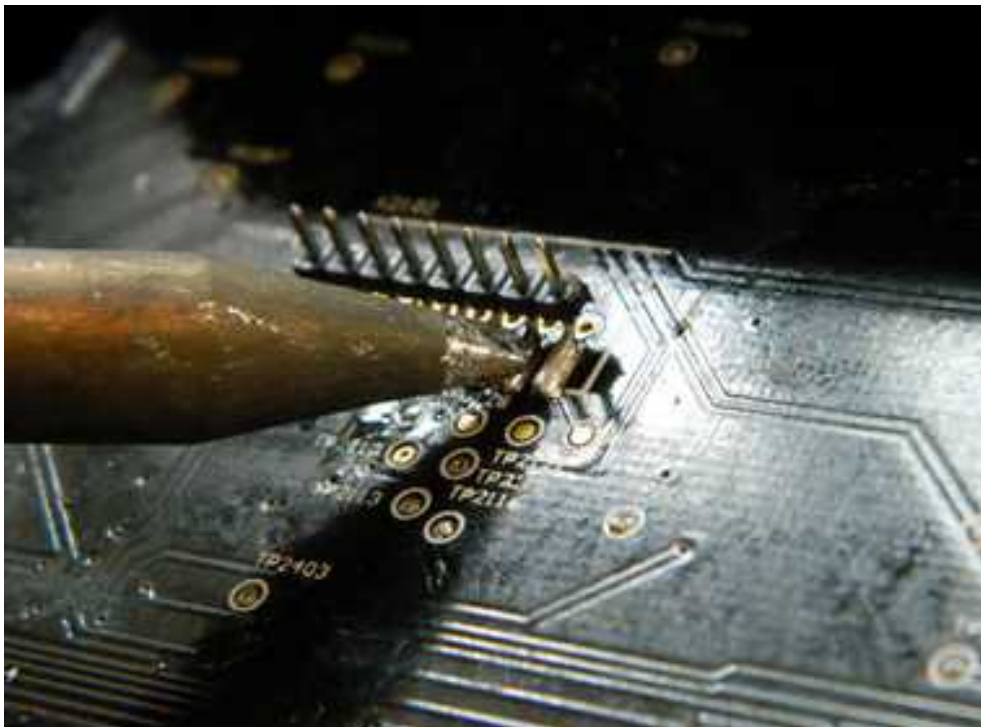
(remove hot glue from this connector first)



Once the connector is removed, clean the solder pads and add some small blobs of solder.



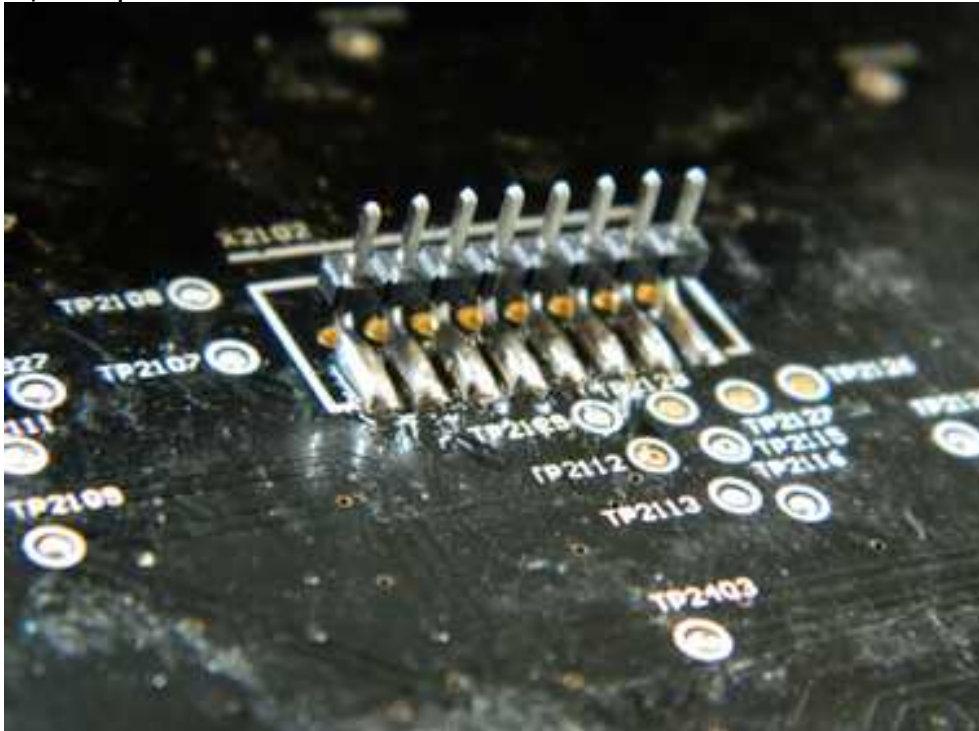
Heat the solder blobs and fit the pin header provided to the pads as shown below.



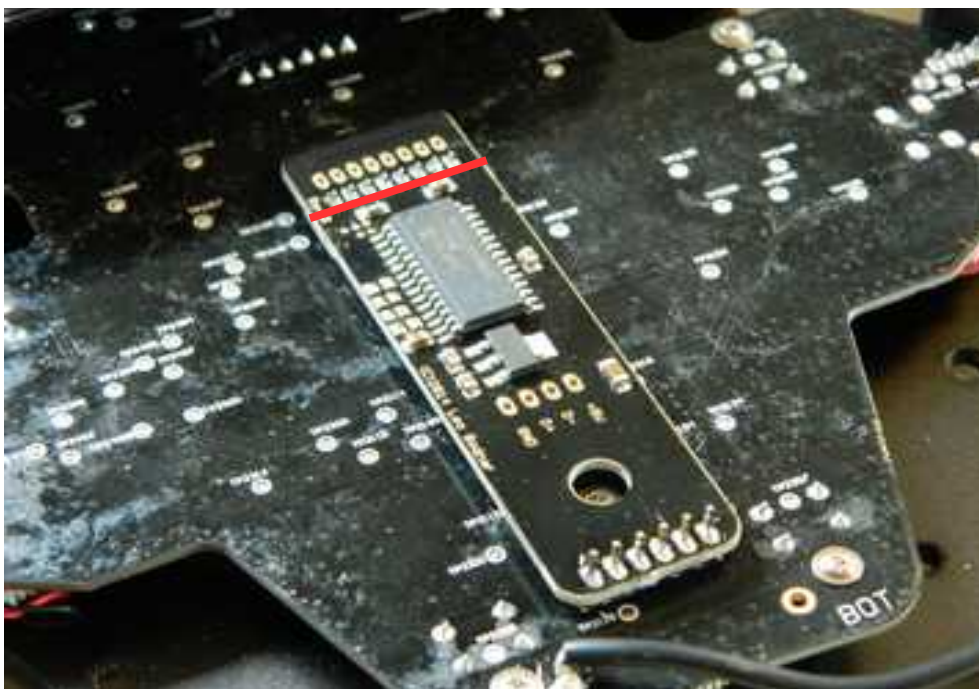
**NOTE: The PCB fits to these pins PLUS some already existing on the PCB (see next page) Check spacing first before soldering.**



Once fitted, the pins should look like this.



Insert these pins through the second row of holes (highlighted) on the conversion PCB, and also the six pins already on the Fanatec PCB. Solder in place.



You can now solder USB wires straight onto the USB solder pads as shown below. We highly recommend drilling a hole into the lower plastic casing and fitting a cable gland:



Alternatively you can fit a panel mounted connector of your choice to the plastic panel or run the wires to your own electrical quick release.

## USB Cable

Any USB cable can be used. We also have coiled USB leads available on our website.

Strip off around 25mm/1" of the wire insulation to expose the coloured wires. Strip around 3-4mm of insulation of each of the coloured wires.

Solder the USB coloured wires onto the labelled solder pads or use the screw terminal using the following table:

+5V	Red	
D-	White	
D+	Green	
GND	Black	

## Re-assembly

Re-assembly of the wheel is a reversal of the procedure shown in the first pages.

Tips:

- ✓ Now is the best time to remove the Fanatec quick release and fit your own!
- ✓ Remember to re-insert the shifter electrical plugs back into the Fanatec PCB
- ✓ Remember re-connect earth wire (if it was disconnected)
- ✓ Fit the plastic part of the casing to the front panel first before re-fitting the shifters.
- ✓ Refitting spacers is very fiddly! Careful not to drop/loose them.

## Software

Software for the converted wheel can be found on [www.fanaleds.com](http://www.fanaleds.com)  
This supports over 30 software titles.

Remember, this converts the wheel into a standalone USB device. Some games have a limit to how many USB game controllers can be connected at once so please check this if your wheel is not working in game.

**E-mail or call us with any queries**

**[support@leobodnar.com](mailto:support@leobodnar.com)**

**+44(0)1327 850666**